

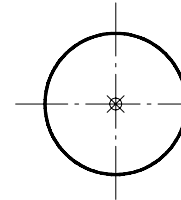
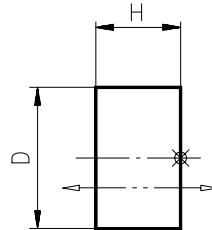


Scheibenmagnete, Samarium Kobalt
Pastilles magnétiques, Samarium Cobalt

Werkstoff:
 Matériau: Sm26/16-17

Temperatur:
 Température: max. 200°C

Ausführung: roh, Höhe geschliffen ± 0.1 mm
 axial magnetisiert
 Exécution: brut, hauteur rectifiée ± 0.1 mm
 magnétifiés axialement



M415.8

	Abmessungen Dimensions		Gewicht Poids g	Hubkraft Force N	Diagramm Diagramme
	D	H			
M400.8	2.5	1.5	0.06	0.65	38
M410.8	3.0	2.0	0.12	1.57	39
M411.8	4.0	1.5	0.15	1.60	41
M419.8	4.0	3.0	0.30	3.00	70
M408.8	5.0	1.5	0.23	2.60	40
M412.8	5.0	2.0	0.32	3.20	40
M413.8	5.0	3.0	0.48	4.40	42
M409.8	5.0	9.0	1.45	7.10	-
M401.8	5.45	4.0	0.95	5.20	44
M426.8	6.0	2.0	0.45	4.10	68
M427.8	6.0	3.0	0.68	5.50	68
M414.8	7.0	3.0	0.92	6.00	44
M402.8	8.0	5.0	2.00	13.80	44
M407.8	10.0	2.0	1.60	7.00	70
M415.8	10.0	3.0	1.90	12.90	46
M403.8	10.0	4.0	2.70	13.70	46
M416.8	10.0	5.0	3.15	20.00	46
M428.8	12.0	3.0	2.70	12.00	70
M404.8	13.8	3.0	3.60	18.30	46
M417.8	15.0	5.0	7.00	29.60	55
M429.8	18.0	4.0	8.00	25.00	70
M405.8	20.0	4.0	11.00	32.60	55
M418.8	20.0	5.0	12.50	31.50	55
M406.8	24.0	4.0	14.50	32.20	70

⊗ = CAD-Anfasspunkt / point de saisie CAO



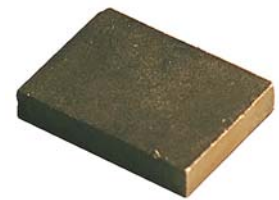
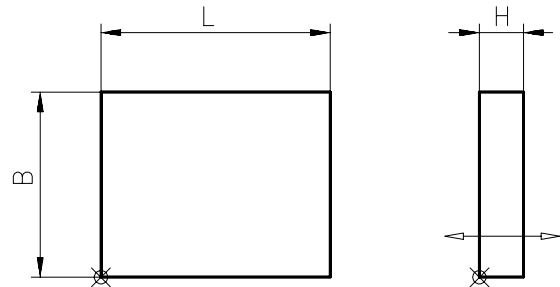
Quadermagnete, Samarium Kobalt

Aimants parallélépipédiques, Samarium Cobalt

Werkstoff:
 Matériau: Sm26/16-17

Temperatur:
 Température: max. 200°C

Ausführung: gesägt ± 0.1 mm,
 durch Dicke magnetisiert
 Exécution: scié ± 0.1 mm,
 aimanté en épaisseur



M477.8

	Abmessungen Dimensions			Gewicht Poids g	Hubkraft Force N	Diagramm Diagramme
	L	B	H			
M470.8	2.0	2.0	1.0	0.03	0.3	38
M430.8	3.0	2.0	1.0	0.05	0.5	38
M473.8	4.0	4.0	2.0	0.26	3.2	42
M472.8	5.0	4.5	1.5	0.27	1.5	39
M482.8	5.0	5.0	3.0	0.60	5.8	—
M471.8	6.0	3.0	1.0	0.15	1.2	39
M424.8	6.0	3.0	2.0	0.30	3.4	111
M431.8	10.0	6.0	5.0	2.40	12.0	53
M474.8	10.0	7.0	2.0	1.12	5.0	53
M475.8	10.0	10.0	3.0	2.40	13.0	53
M476.8	12.0	9.0	2.5	2.16	8.7	53
M477.8	16.0	12.0	3.0	4.60	15.0	53
M478.8	18.0	16.0	4.0	9.20	21.5	56
M479.8	26.0	21.0	5.0	21.85	40.0	59
M480.8	30.0	10.0	6.0	14.40	27.5	56
M481.8	32.0	27.0	6.0	41.50	76.0	59

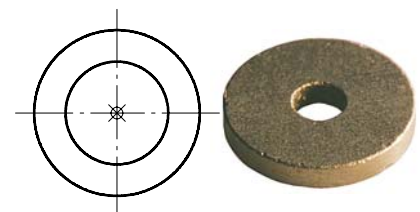
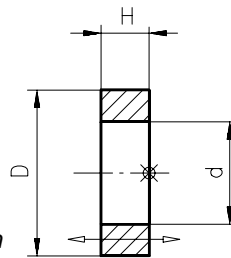
Ringmagnete, Samarium Kobalt

Aimants annulaires, Samarium Cobalt

Werkstoff:
 Matériau: Sm26/16-17

Temperatur:
 Température: max. 200°C

Ausführung: roh, axial magnetisiert,
 Höhe geschliffen ± 0.1 mm
 Exécution: brut, aimanté axialement,
 hauteur rectifiée ± 0.1 mm



M421.8

	Abmessungen Dimensions			Gewicht Poids g	Hubkraft Force N	Diagramm Diagramme
	D	d	H			
M420.8	11.0	6.8	3.2	1.6	5	65
M421.8	19.5	5.4	3.0	6.7	13	—

= CAD-Anfasspunkt / point de saisie CAO